



ISTABAI

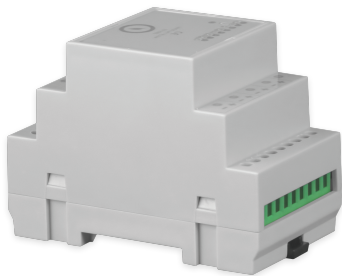
[ISTABAI.COM/SUPPORT](https://istabai.com/support)

MULTISWITCH

SETUP GUIDE

MULTISWITCH

SPECIFICATIONS AND SAFETY



This device offers the control of 6 independent devices, electrical chains or equipment. It has two built-in power relays and four controlled outlets. The multiswitch communicates through the base station.

The device is sold without power supply, but it can be purchased separately.

Connection location and power supply

- 4 controlled outlets (P1-P4)
- 2 built-in relays (S1 un S2)
- Socket for effective shielding
- Power supply options (DC 12-24V)
- Power consumption: up to 0.9 W (without outlets)

Impact of external environment

Operating

- Temperature range: 0° C to 40° C
- Humidity: 5% to 95% relative humidity

Storage

- Temperatures: -30° C to 70° C
- Max. humidity: less than 95% relative humidity

Size

- Length: 90 mm - Width: 53 mm - Thickness: 65 mm

- The device is meant for indoor use.
- Keep the device dry. Precipitation, humidity, and all types of liquids or moisture may cause damage.
- Do not place the device in hot areas. High temperatures can shorten the life of electronic devices and warp or melt certain plastics.
- It is forbidden to open the outside shell of the base station. This may result in harming your health and safety, and the warranty will no longer be standing. The shell does not contain any components that would be replaceable or fixed by the user.



SET-UP

Setting up the Istabai heating control system.

Before setting up the multswitch, you must set up the base station, which can be done at istabai.com/start. When that's done, proceed to these steps:

1. Add the desired devices or electrical currents to the outlets (S1, S2, P1-P4).
2. Connect the multswitch to a power supply.
3. At the front of the multswitch, you'll see its identification number, which can also be seen in registration window at each of the device's outlets. Using this, indicate which room is connected to any of the outlets.

Additional installments (to an already existing Istabai system)

In your Istabai account (istabai.com/app), open the “settings” section, and choose “add a device”. Fulfill the above steps.

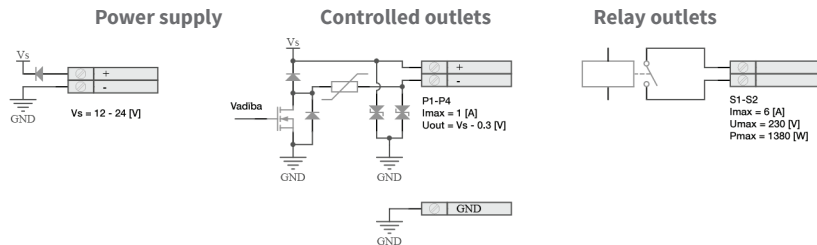
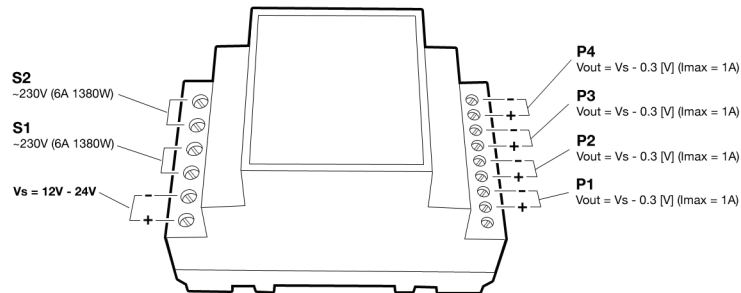
Setting up the multswitch for remote control, using the API

In this case you must have the Istabai base station set up, but you won't need to open the Istabai web application.

Necessary:

1. Connect your desired devices or electrical currents to the outlets (S1, S2, P1-P4)
2. Connect the multswitch to a power supply
3. Get in touch with the Istabai support team for API access, receiving the key, and documentation for use.

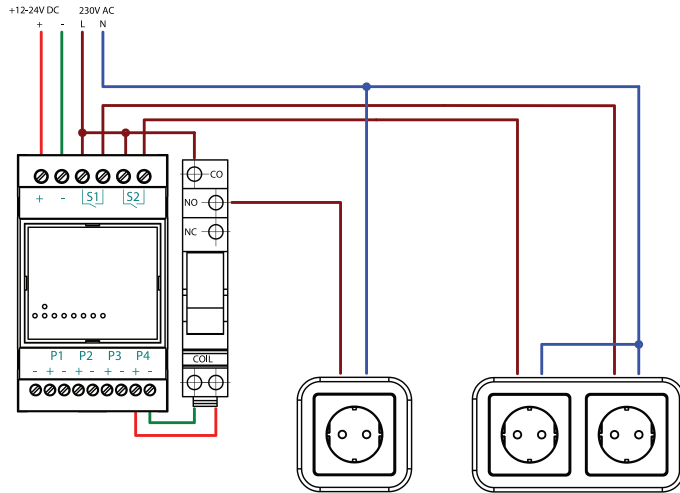
CONNECTION LOCATIONS AND ELECTRICAL DIAGRAMS



MULTISWITCH USAGE

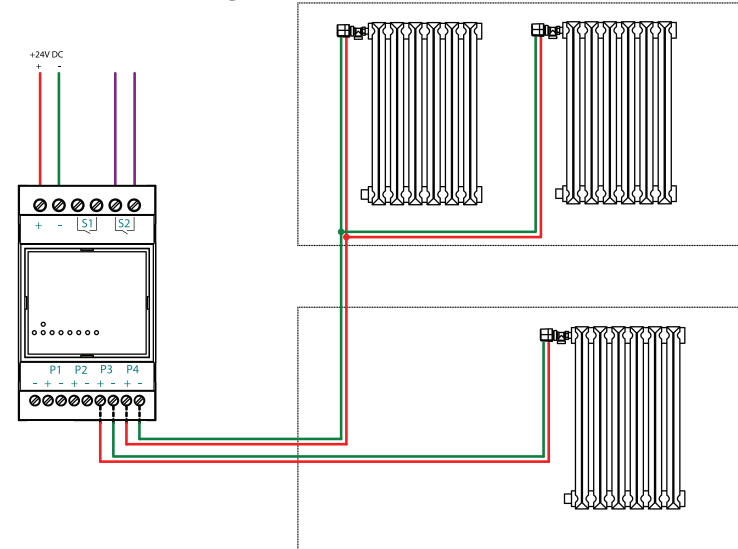
The device is meant for electrical floor, light, ventilator, valve circuit and other household device remote control. The body of the multiswitch is meant to be attached to a standard DIN track in the fuse box or electrical distribution panel.

Example for controlling electrical sockets



MULTISWITCH USAGE

Example for controlling radiators



The situations in the mentioned examples can be combined together, as well as added to with other electrical devices you wish to manage.